

Build the next generation of intuitive machinery with digital inspiration

Accelerate the design, build, installation and commissioning of flexible, modular machines for the process or packaging line.

Food and beverage key trends

- Changing consumer demands** require rapid product introduction and a reduction in the time from idea to technical readiness
- Emerging markets** are driving a greater need for localized product variants and agility across the supply chain
- Sustainability** requirements for packaging and processes are driving change

Food and beverage challenges

To meet these challenges, machine builders need to deliver machines more efficiently and profitably with flexible, modular designs for easy and smooth integration for the end customer that allows maximum reuse when designing variants to support production.

Digital technologies

Cloud and Edge – connectivity, IoT, building new eco system

New business models – direct sales, pay per use

Artificial intelligence – New way of gaining insights

Consumer driven innovation

Personalization of products and experiences

Fast delivery consumer spending shift

Health conscious & sustainable

Reduction of water usage and CO2 footprint

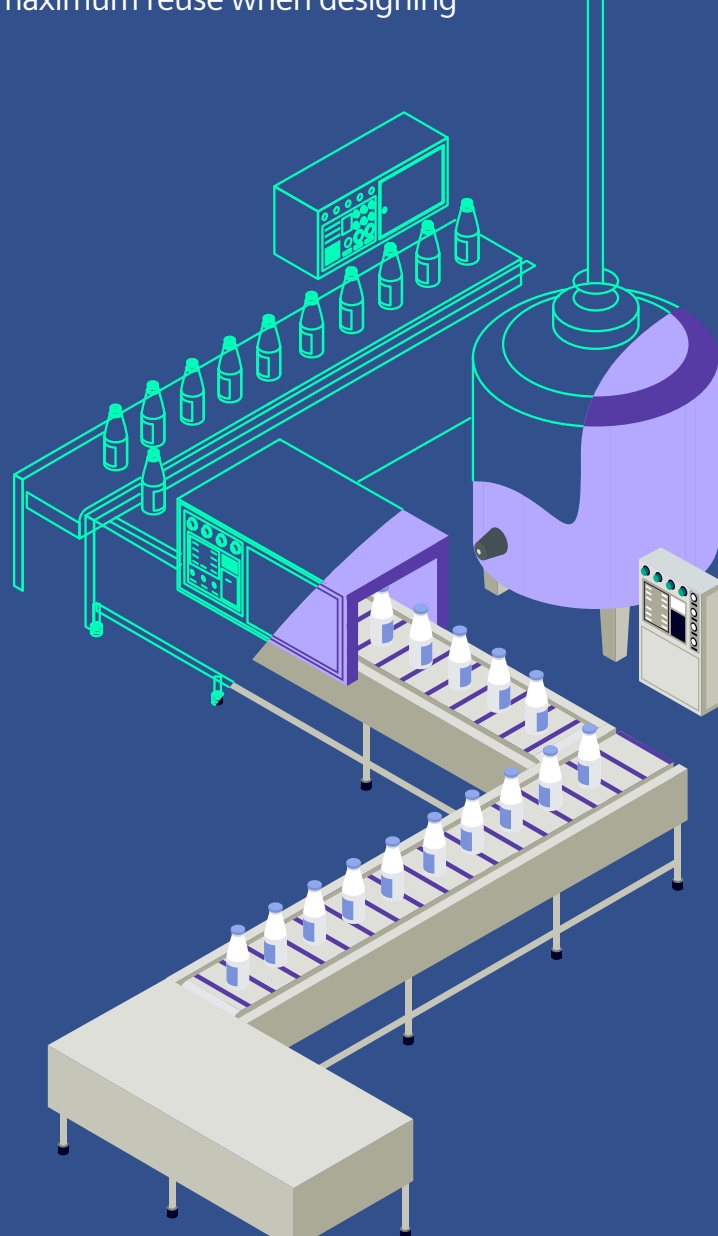
Reduce waste, avoid plastics and use recycled materials

Production facilities use 100% green electricity

Transparent flexible supply chains

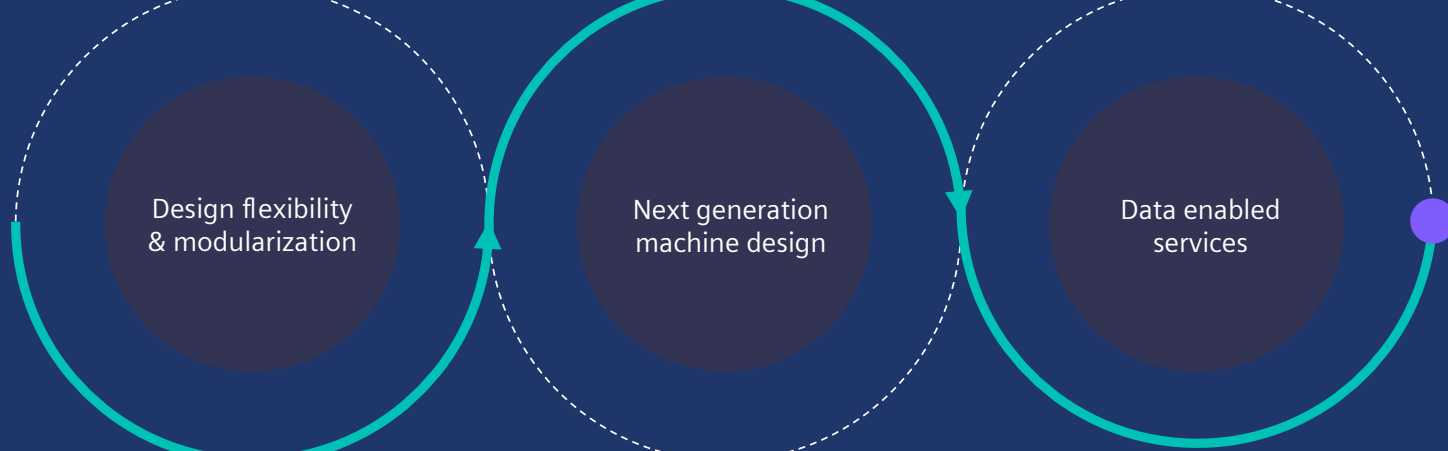
Ensure fair trade supplier practices

Sustainable & traceable sourcing



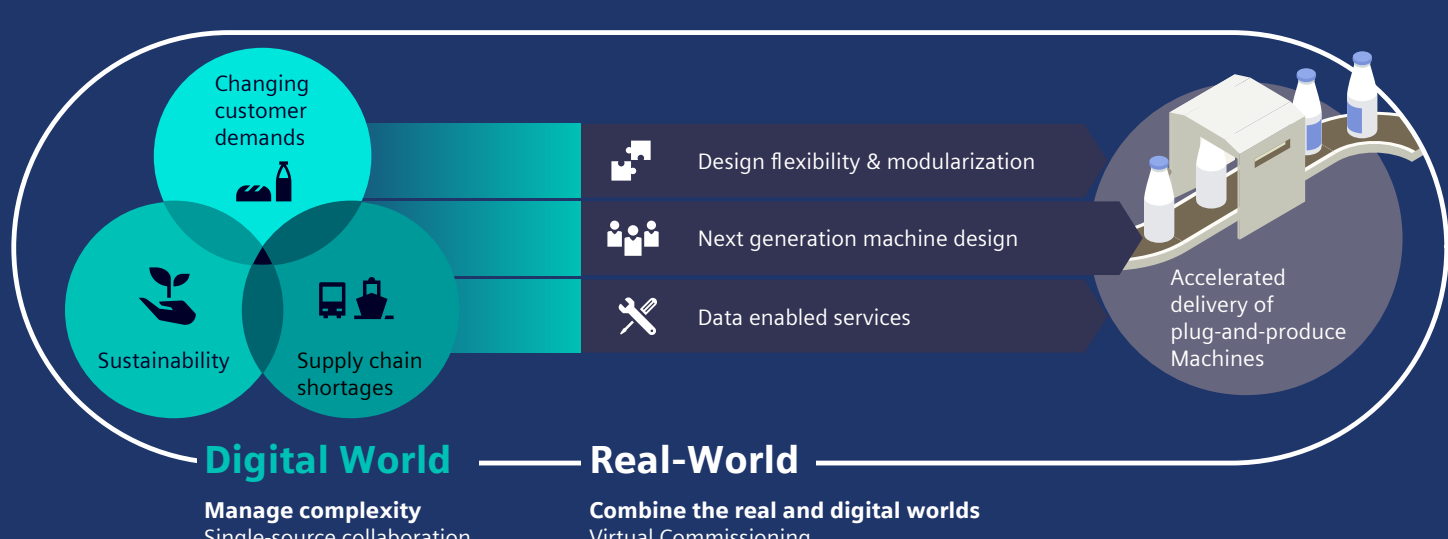
The solution

Advanced Machine Engineering



Accelerate the design, build, installation and commissioning of flexible, modular machines for the process or packaging line.

Comprehensive digital solutions for Food & Beverage

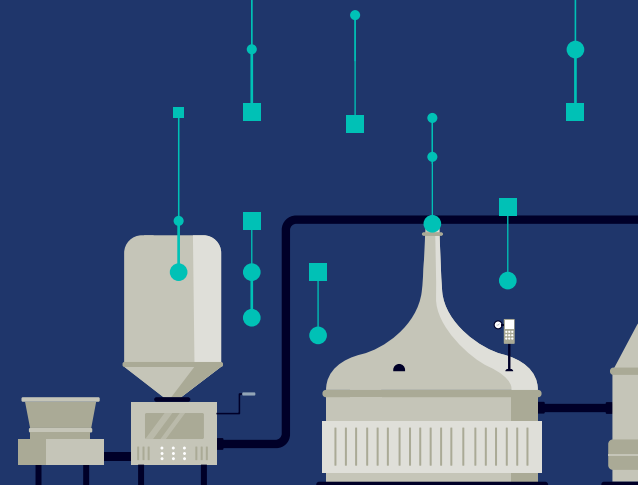


Digital World
Manage complexity
Single-source collaboration

Real-World
Combine the real and digital worlds
Virtual Commissioning

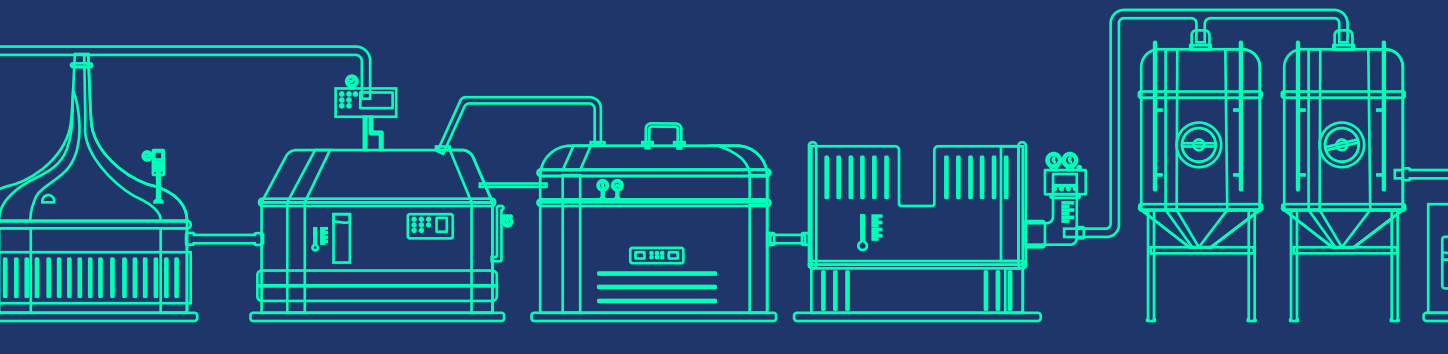
Design flexibility & modularization:

- Deliver machines more efficiently and profitably with flexible, modular designs
- Enable end-users to deploy lines faster through standardization
- Reduce development time by using preconfigured tools
- Use libraries to automate engineering tasks and accelerate machine development



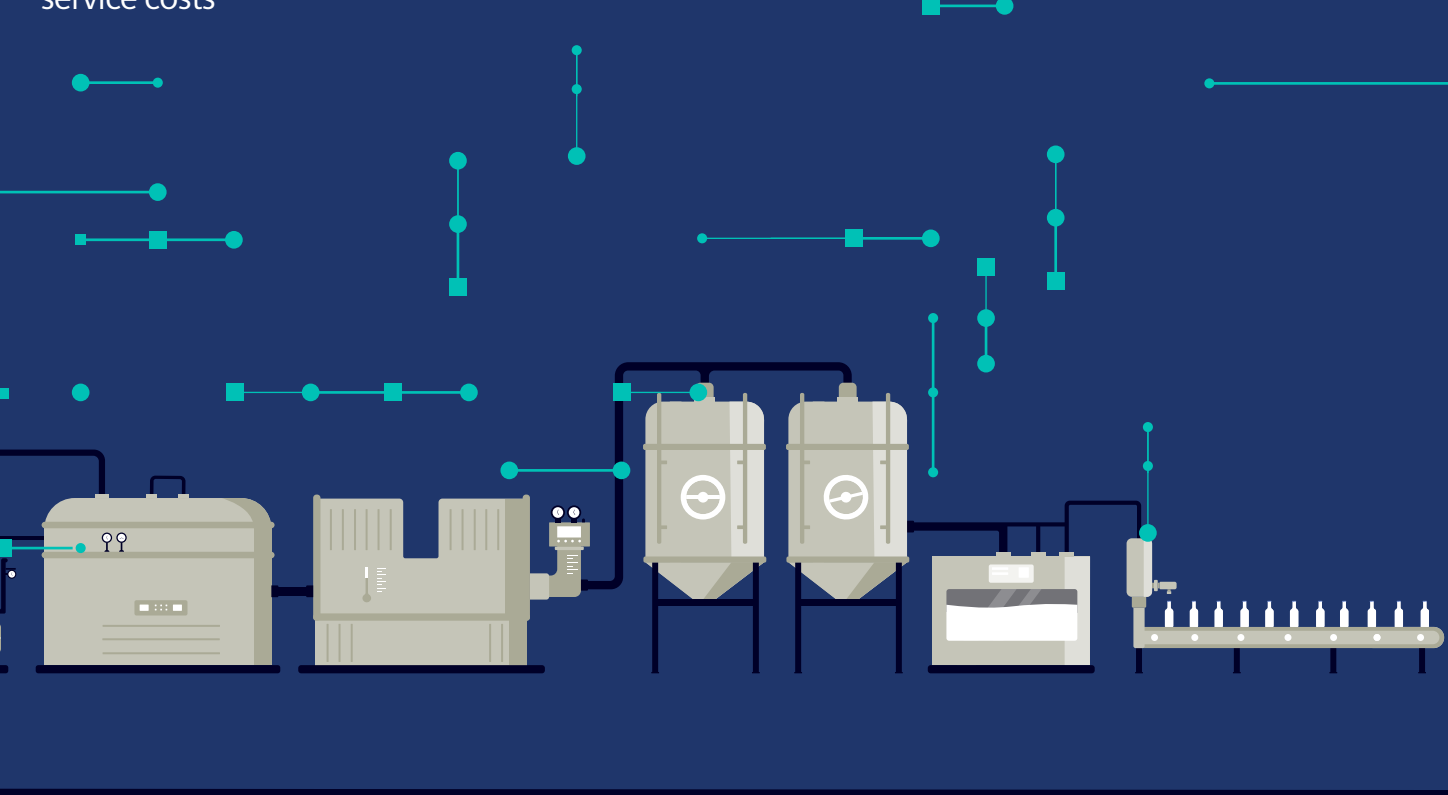
Next generation machine design:

- Improve performance through simulation-driven design
- Integrate bid management, concept design, project planning and product quality into a single system
- Leverage the digital twin to virtually commission machines and speed up deployment
- Gain greater visibility into energy and operational costs to improve sustainability



Data enabled services:

- Enable remote monitoring of assets in the field to reduce equipment downtime and time to repair
- Drive predictive maintenance to reduce service costs
- Gain insight into how machines are used to maximize the end users' efficiency and satisfaction



What's next?

Adopt a plug-and-produce approach to deliver against the demands of the ever-evolving food & beverage industry with Advanced Machine Engineering.

[Learn more](#)

